

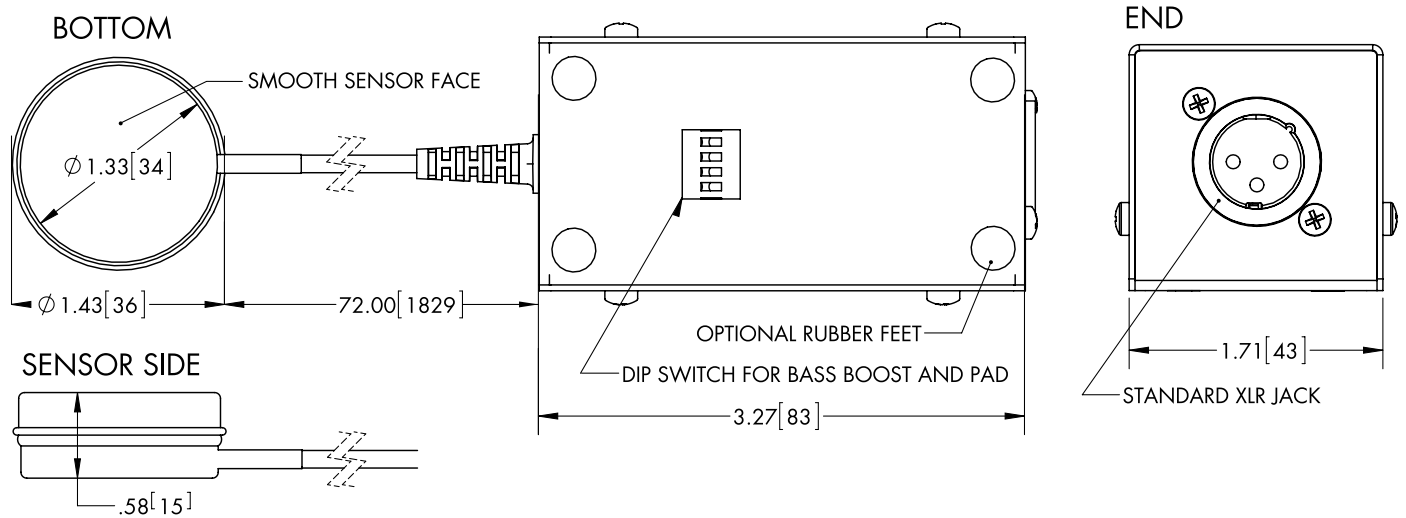
The **CORTADO MKIII** CONTACT MICROPHONE By **ZEPPELIN DESIGN LABS**

The Cortado MkIII is a high quality contact microphone featuring a robust, sensitive transducer designed for use in professional applications. The Cortado is now in its third generation, benefiting from improvements in nearly every area of design. The internal class-A pre-amplifier is fully balanced with a low impedance output, which allows for wide bandwidth, low signal losses, and high signal to noise ratio. The transducer is connected to the pre-amp chassis via a high quality 6 foot long shielded cable. User-controlled features such as a -10dB pad and "bass boost" (high pass filter) make the Mark III extremely versatile in any application.

- Built-in preamp circuit capable of driving a balanced signal through hundreds of feet of cable.
- Preamp circuit features hand-matched, high quality components for a low noise floor and tonal transparency.
- Bandwidth: 50Hz - 17kHz
- Fully balanced signal path for extremely low noise floor
- -10dB switchable pad to attenuate loud sound sources.
- Sensor is encased in an extremely robust metal enclosure for near-indestructibility.
- 6 foot (1.8m) high quality shielded cable from chassis to sensor.
- 20 gauge steel chassis.
- Requires phantom power from a standard XLR mic cable.



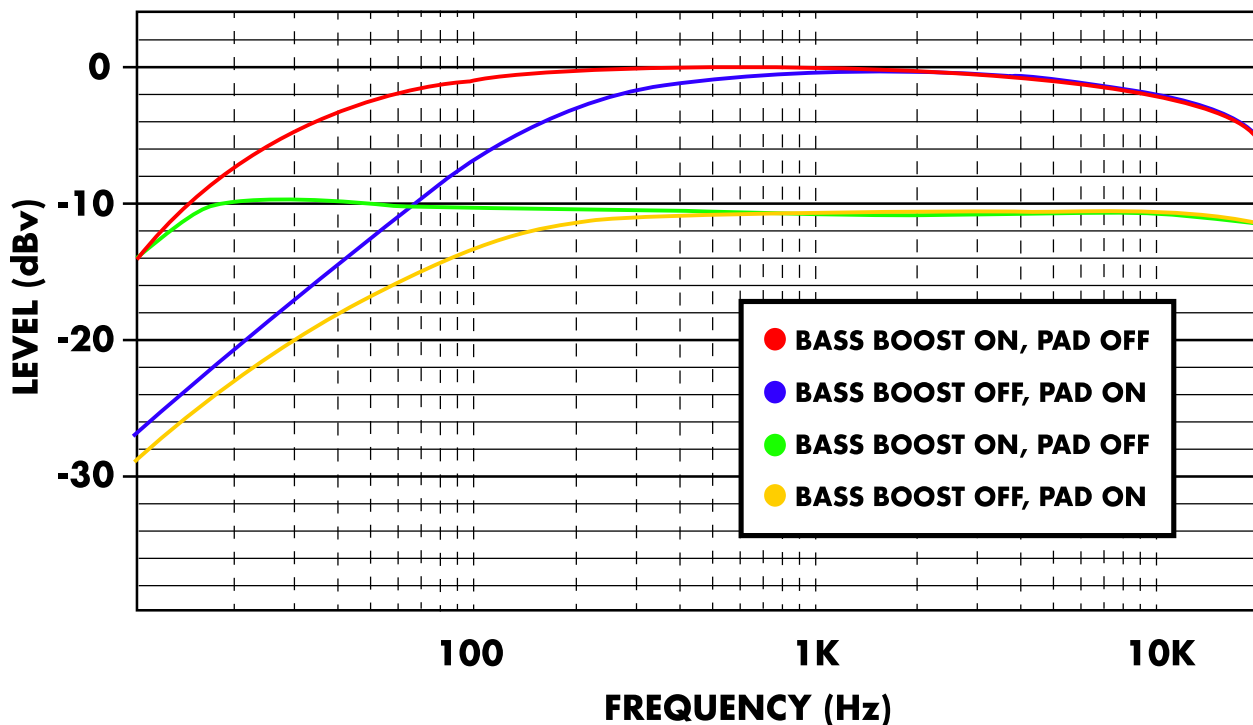
DIMENSIONS

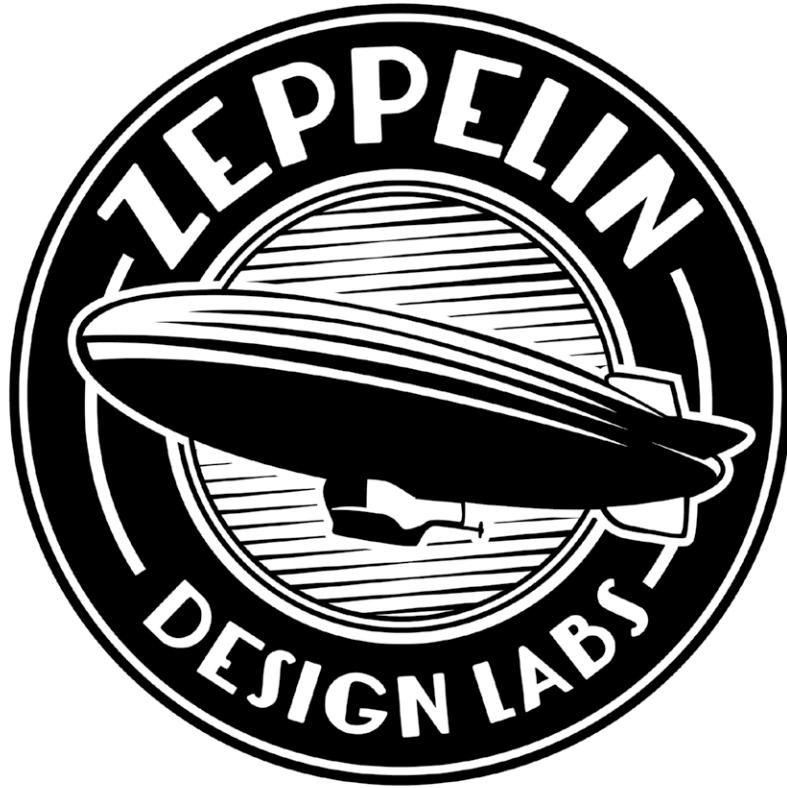


TECHNICAL SPECIFICATIONS

- Transducer type: PZT
- Frequency response (see graph): 50Hz-17kHz, 200Hz-17kHz
- Output impedance (at 1kHz): ~4.4k ohms
- Built-in preamp gain: ~150 (without pad), ~50 (with pad)
- Circuitry topology: Class-A preamp, fully balanced
- Operating temperature: -40 to 85 degrees C
- Operating phantom voltage: 24V - 48V
- Phantom power current: ~1.3mA
- Sensor cable length: 6 ft. (1.8m)

CORTADO MKIII FREQUENCY RESPONSE





ZEPPELIN DESIGN LABS

2950 N. WESTERN

CHICAGO, IL

60618

www.zeppelindesignlabs.com

WWW.CORTADOMIC.COM