

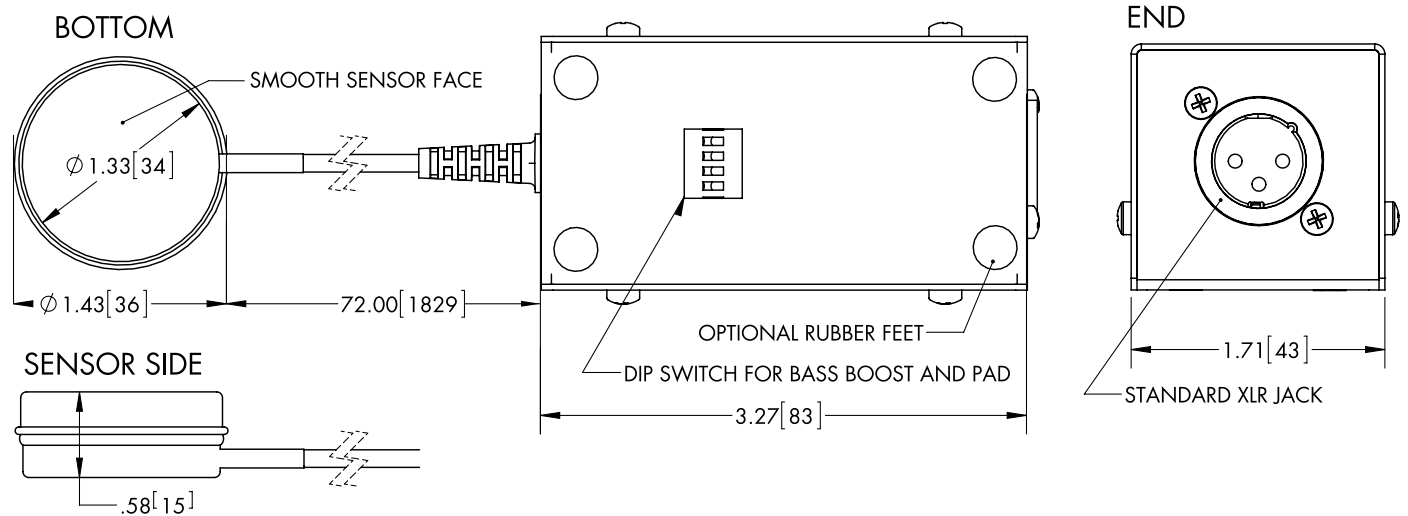
# The **CORTADO MKIII** CONTACT MICROPHONE By **ZEPPELIN DESIGN LABS**

**The Cortado MkIII** is a high quality contact microphone containing a robust, sensitive transducer designed for use in professional applications. The internal class-A pre-amplifier is fully balanced with a low impedance output, which allows for wide bandwidth, low signal losses, and high signal to noise ratio. The Cortado contact microphone is now in its third incarnation; with improvements to make it more robust, extra versatile, and easier to use. The Mark III offers an extremely robust, yet sensitive transducer connected to the pre-amp chassis via a high quality 6 foot long cable. User-controlled features such as a -10dB pad and "bass boost" (high pass filter) have been added, making the Mark III extremely versatile in any application.

- Built in preamp circuit capable of driving a balanced signal through hundreds of feet of cable.
- Preamp circuit features hand-matched, high quality components for a low noise floor and tonal transparency.
- Bandwidth: 23Hz - 40kHz
- Fully balanced signal path for extremely low noise floor
- -10dB switchable pad to attenuate loud sound sources.
- Sensor is encased in an extremely robust metal enclosure for near-indestructibility.
- 6 foot (1.8m) high quality shielded cable from chassis to sensor.
- 20 gauge steel chassis.
- Requires phantom power from a standard XLR mic cable.

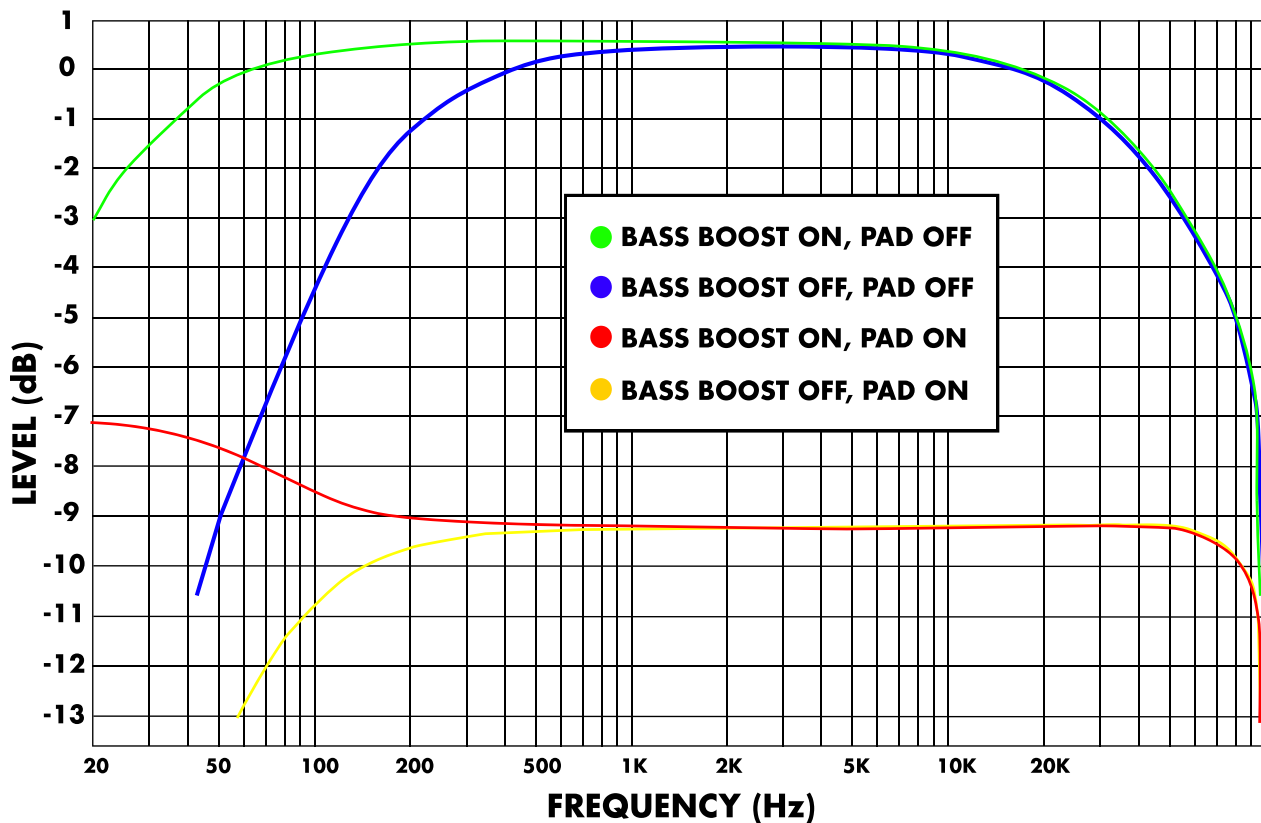


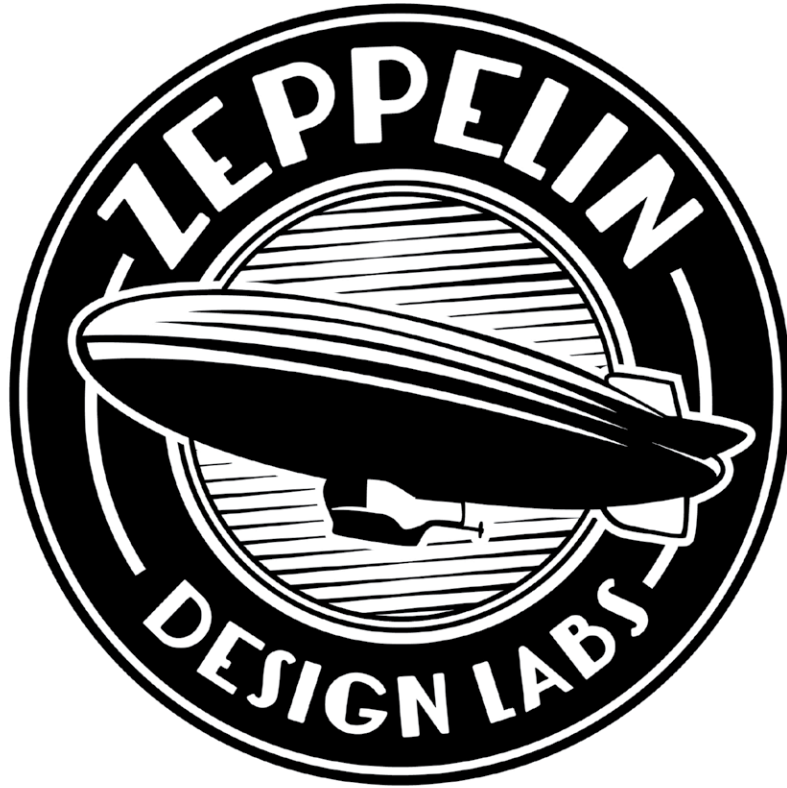
## DIMENSIONS



## TECHNICAL SPECIFICATIONS

- Transducer type: PZT
- Frequency response (see graph): 23Hz-40kHz, 150Hz-40kHz
- Output impedance (at 1kHz):  $\sim 4.4k$  ohms
- Built-in preamp gain:  $\sim 150$  (without pad),  $\sim 50$  (with pad)
- Circuitry topology: Class-A preamp, fully balanced
- Operation temperature:  $-40$  to  $80$  degrees C
- Operating phantom voltage:  $24V - 48V$
- Phantom power current:  $\sim 1.3mA$
- Sensor cable length: 6 ft. (1.8m)





**ZEPPELIN DESIGN LABS**

**2950 N. WESTERN**

**CHICAGO, IL**

**60618**

**[www.zeppelindesignlabs.com](http://www.zeppelindesignlabs.com)**

**[WWW.CORTADOMIC.COM](http://WWW.CORTADOMIC.COM)**